

# G DATA ENDPOINT PROTECTION BUSINESS

THE ALL-INCLUSIVE PACKAGE FOR NETWORKS OF ANY SIZE

G DATA Endpoint Protection offers maximum security through active hybrid protection using CloseGap technology, and the best reaction times to current threats.

The optional Network Monitoring module helps you keep track of

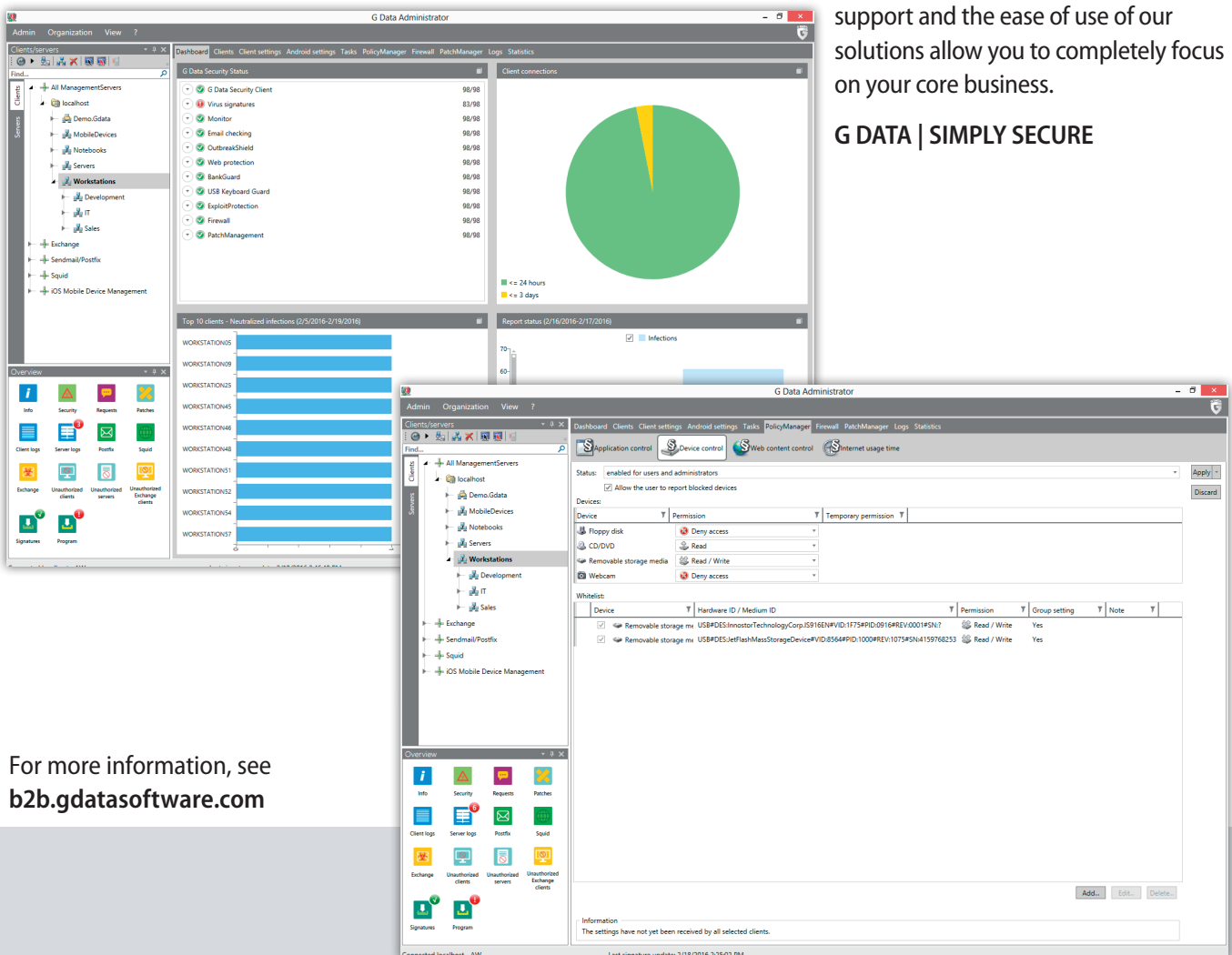
your complete infrastructure – from printers to servers. Using the Patch Management module you can make sure that the third party software on your clients is up-to-date at all times.

With the new Endpoint Protection version 14.0 you can now also

manage your Mac clients centrally using G DATA Administrator and take advantage of the integrated Exploit Protection, which protects your computers against vulnerabilities in installed software.

G DATA stands for excellent IT security for businesses. Our outstanding support and the ease of use of our solutions allow you to completely focus on your core business.

**G DATA | SIMPLY SECURE**



For more information, see [b2b.gdatasoftware.com](http://b2b.gdatasoftware.com)



SIMPLY  
SECURE

## NETWORK PROTECTION & POLICY MANAGEMENT

### COMPLETE CLIENT PROTECTION

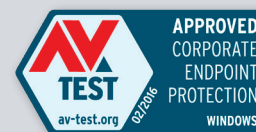
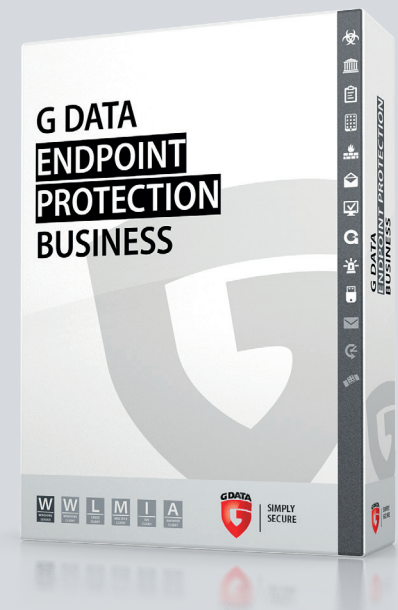
|  |   |
|--|---|
| CloseGap hybrid technology   | Maximum protection through proactive and signature-based detection  |
| G DATA BankGuard   | Secure online payments – no browser add-on or additional software required  |
| Behavior Blocker   | Protects against even unknown viruses   |
| <b>NEW!</b> Protection against vulnerabilities in installed software | Exploit Protection reliably protects your clients against vulnerabilities in installed programs – from text editors to browser plug-ins |
| Protection against harmful USB devices                               | The integrated USB Keyboard Guard reliably protects clients against harmful USB devices masquerading as keyboards                       |
| Integrated protection against spam and virus-infected email          | Add-on for Microsoft Outlook and for POP3 and IMAP accounts   |
| Powerful firewall  | Monitors all incoming and outgoing connections and protects against DoS attacks, port scans and much more                               |
| <b>IMPROVED!</b> Antivirus for Linux clients                         | Protects Linux computers in the company network against Internet threats. Now with support for even more distributions                  |
| <b>NEW!</b> Centrally managed antivirus for Mac clients              | Manage Apple computers in your network comfortably using G DATA Administrator   |

### CENTRAL ADMINISTRATION

|  |  |
|--|--|
| <b>IMPROVED!</b> Simple administration and fast overview | Central management of installations, virus scans and user permissions  |
| Clear dashboard  | User-friendly overview of all relevant information, including context-based help   |
| Remote administration                                    | From anywhere via web interface – even from mobile browsers  |
| Device control   | Control who is permitted to use USB sticks, storage cards or burners   |
| Application control                                      | Specify which programs are allowed to be installed or run  |
| Web browsing filter and control of Internet use          | Websites can be blocked if required; web browsing time can be restricted   |
| Active Directory integration                             | Transfer existing group structures and automate client installation  |
| Mobile Device Management                                 | Central administration of mobile Android and iOS devices, with antitheft protection, app checking, corporate phone book, call filter and much more (features can differ depending on the system) |
| Software and hardware directory                          | Detailed display of the entire inventory   |
| Support free of charge 24/7/365                          | Development and in-house support work closely together to help you as fast as possible   |

### OPTIONAL MODULES

|   |   |
|---|---|
| <b>NEW!</b> Network Monitoring          | Monitor your complete infrastructure, from printers to servers, using individually customizable metrics |
| Patch Management                        | Centrally controlled software updates for Microsoft and third-party software                            |
| Premium service and support             | Guaranteed response times and highly specialized support contacts – offer available on request          |
| <b>NEW!</b> Exchange Mail Security      | Take advantage of virus protection and AntiSpam for your Microsoft Exchange Server (2007 through 2016)  |
| <b>NEW!</b> Linux Mail Security Gateway | Add virus protection and AntiSpam to your Postfix- and Sendmail-based Linux Mail Server                 |
| <b>NEW!</b> Linux Web Security Gateway  | Extend your Squid-based Web Gateway with comprehensive protection against viruses and phishing          |



### System requirements

[www.gdatasoftware.com/solutions-products/business/system-requirements](http://www.gdatasoftware.com/solutions-products/business/system-requirements)



CloseGap, © 2013-16 G DATA Software AG.  
 Android is a trademark of Google Inc. Use of this trademark is subject to Google Permissions. Microsoft®, Windows®, Windows® 10, Windows® 8, Windows® 7 and Windows Vista™ are either registered trademarks or trademarks of Microsoft Corporation in the United States and/or other countries.